

Behind My Boat, I Fly.

SUPRA
Times



NEWSLETTER

2 years
in a row.

marine industry
CSI
award
2007
Excellence in Customer Satisfaction

Supra Did It Again!

We appreciate those of you who have taken the time to fill out the NMMA surveys when you purchased your new boat. Supra's Customer Service Index continues to move upward and we are one of the few select brands in the boating industry to receive the NMMA award for superior customer satisfaction, thanks to you! So, if you receive a survey to complete regarding your experience, please fill it out. Your feedback is very important in helping us to improve.

For the second consecutive year, Supra received the prestigious CSI award given by the National Marine Manufacturing Association to boat manufacturers that achieve over a 90% customer satisfaction score from surveys administered to recent boat owners. 2007 Skier's Choice Dealers who were recognized for their extraordinary customer service includes:

- Stengl Marine, Minocqua, WI
- Watersports of Central Florida, Sanford, FL
- Extreme Power Sports, Greenville, IL
- A & S Boats, South Windsor, CT
- Gillan Marine, Alton Bay, NH
- Tall Timbers Marina, Monticello, IN
- Nisswa Marine, Nisswa, MN
- Knoxville Watersports, Knoxville, TN
- Island Marine, Corona, CA

Supra's All New 2008 Website Revealed



Supra has completely renovated the 2008 Supra Website. The extreme makeover boasts a complete redesign offering users more of what they want; a multitude of easy to find videos and photos with larger viewing windows complete with the ability to customize and price your Supra with all the colors and options available.

The videos feature 360° rotations, technical specifications to include footage of each boat from 0-30 MPH, hole shots, straight line tracking, wake size and running shots. The already popular trick room offers interactive wakeboard training tools featuring Josh Sanders, Trevor Hansen and Kyle Schmidt.

Photography for each Supra model is easy to find with larger photographs and an array of shots to view your dream boat at any angle imaginable. The all new colorizer has been improved and enlarged, so buyers can select and view the different color options available prior to ordering their new Supra.

The content throughout the website offers valuable information for existing customers, new customers, skiers, wakeboarders, dreamers and anyone interested in one of the great pleasures of life, boating. Supra's bulletin board offers users the chance to input their own content and join in on the community of fellow Supra boat owners.

Supra's new Five Star Protection Plan, Ride System and details around the WWA World Wakeboarding Championships are all featured on the new website. There are more in depth interviews, videos and photos of Team Supra Riders with the option to download videos and photos onto your desktop or ipod of team riders or your favorite Supra model.

The all new website tells the "IFly" story and defines why the Supra Ride System is what elevates the performance of Supra boats above all other tournament wakeboard boats. To visit the all new 2008 Supra website go to www.supraboats.com. **Enjoy!**





Letter From The President

Hello again, and welcome to our fifth edition of the Supra Times. Some of you have been with us since the beginning and some of you are just joining our family of owners. I would like to thank each of you for making 2007 another remarkable year. Seriously, thank you for choosing us.

We have a wealth of information in this edition of our newsletter featuring articles about owner's reunions held this past summer, new products just announced, all the details surrounding our sponsorship of the recently held WWA World Wakeboarding Championships, boating tips, the latest industry trends to what our team riders are up to and training clinic tours that may be coming to your area.

We are very excited about our 2008 product changes and industry leading Five Star Protection Plan introduced this year. Now more than ever, Supra engineering delivers uncompromised performance, luxury and the reliability you look for in our boats. So when you hit the water, you can ride in confidence season after season.

If there is anything at all that we can do to make your boating experience even more pleasant, please do not hesitate to call. At Supra, we're always thinking and we're always listening to our customers, to our riders, to our engineers and to our instincts. Your comments have made a difference in the boats we build and we value your opinion. So give us a call, send a message or post a comment on our community bulletin board at www.Supraboats.com.

Again, thank you for choosing Supra.

Sincerely,

Rick Tinker, President
Skier's Choice Inc

*Forever young, I fly.
Once, I had no worries.
Young at heart, eternal youth.
Now the world sits large on my shoulders,
Straining my back, stressing me.
My boat takes me out there, sets me free.
Above the water, I lose all fears.
In my wake, I leave worries. I leave anger.
I leave years.*



The Strongest Tournament Boat Coverage Available Today!



The 2008 model line of Supra boats is now equipped with an undeniably industry-leading feature, the Five Star Protection plan. The Five Star Protection plan is the longest, most comprehensive factory supported protection program in the tournament tow boat market today.

The Five-Star Protection plan speaks directly to our product quality and to our confidence in Supra's ability to deliver best-in-class performance. The Five Star Protection Plan features:

HULL:	Limited Lifetime
ENGINE & DRIVE TRAIN:	Five Years (transferable to a second owner)
COMPONENTS:	Five Years (limited)

Protection plan coverage applies to parts and labor costs

COMPONENT COVERAGE INCLUDES:

- Digital Depth Finder: Depth finder, transducer, mounting brackets and control cable. (Applies to one factory installed unit)
- Electrical: Interior courtesy lights, tower light assembly, docking/bow lights, stern light, dual battery switch, speedometer paddle wheel, cabin light fixtures, electric horn and windshield wiper motor. (Excludes light bulbs)
- Stereo: CD player, amplifier, cassette tape deck, AM/FM tuner and tower speakers. (Factory installed units only)

- Wakeplate/Trim Tab: Pump, Trim, cylinders, planning plates, relays and switches.
- Pumps: Bilge pump, bladder pumps, switches, bladder solenoids and circuit breakers.
- Lake Water Temperature Gauge: Temperature gauge, temp sensor and control cable. (Hull mounted only)
- Hardware: Wakeboard tower, board racks, speaker/light mounts, stainless steel deck railings, grab rails, bow eyes, rope cleats, door hinges and latches, deck plates and storage.
- Instrument Panel (Factory Installed): Tachometer, speedometer, dash information center, PerfectPass speed control gauge, volt gauge, hour meter, oil pressure gauge, trim gauge, fuel gauge and temp gauge.
- Trailer: Brakes, brake drums, master cylinder and hydraulic brake actuator, frame rails, wheel bearings, spindles and springs, winch stand, welds, axle, backing plates, coupler, bunk and roller cradles. (Excludes damage due to overloading and bending or bearing failures due to water entry or debris)

Supra is one of only seven boat builders in the marine industry to include such coverage as standard equipment on all Supra products. A quick reference guide and warranty statement is available on the Supra website at www.supraboats.com for your review.

WWA WORLD WAKEBOARD CHAMPIONSHIP EDITION Made Exclusively to Pull the World Championships

At the 2007 WWA World Wakeboard Championships, Supra introduced the World's Launch Edition. The World's Edition package is available on all Supra Launch model boats: Launch 20 (direct drive), Launch 20SSV (v-drive), Launch 21V (v-drive), Launch 22SSV (v-drive) and Launch 24SSV (v-drive). The World's edition incorporates the following features for each of the models listed above:

- Custom Gelcoat Pattern: Brittany Blue, Black & White
- World's Decal Set
- White Stainless Steel Rubrail
- Custom Black Swivel Board Racks
- Custom Black 4-Speaker Light Bar with LED lights
- Z-5 Cargo Rack
- Tower Mirror Bracket2
- 5-Channel Amp (700.5)
- 2-Channel Amp (250.2)
- Subwoofer
- Dual Battery
- 5.7L 340HP ETX CAT engine from Indmar with catalytic converter
- Tandem Trailer – black
- 18" Custom Wheels and Fenders



- 18" Spare Tire
- Aluminum Step Plates
- Illuminated Laser Cut Steps
- LED Trailer Lighting
- Supra Five-Star Protection Plan

The Launch 24SSV World's edition pulled all professional events at the recently completed WWA World Championships other than the pro wake skating events, which were exclusively pulled by the World's Edition of the Launch 22SSV.

Want to Improve Your Wakeboarding Skills?

Skier's Choice and your local dealer presents the 2008 Training Clinics featuring on-the-water wakeboard clinics conducted by professional riders with over 15 years of instructional experience. On-the-water clinics are available with Dave Briscoe, Russ Wilde and Kyle Schmidt. Contact your local dealer to see if a clinic is coming to your local lake.

Dave Briscoe Summer Sessions

Dave Briscoe's induction into the Rochester Sports Hall of Fame was a great start for kicking off the 6th Annual 2007 Summer Sessions tour. Once again the tour exceeded all expectations with twenty-four stops exposing students to wakeboarding and the wake of a Supra boat from the Southeast to the Rockies, out to the Desert, then the Plains of the Midwest, over to the Appalachians and back to the South. With 117 degree heat to 57 degree shivers, Briscoe's Summer Sessions was a huge success for dealers across the U.S.

The media was awaiting Briscoe at many stops during this year's tour. Dealers in Shreveport, Monroe, Oklahoma City, Pueblo West, Wisconsin and upstate NY had news crews waiting for one on one and on the water interviews. Briscoe explains, "This brought tons of local attention to the sport we push with so much love!"

Briscoe runs a tight ship with each and every event beginning on time, ensuring that absolutely no one missed their assigned spot. This year Briscoe had to turn away students simply due to lack of time. So book early if you would like to take part in the tour that started it all. Briscoe will do his best to fit everyone in.

Contact your local dealer to schedule a session with Dave Briscoe's Summers Sessions tour. Visit <http://www.thewakeboardcoach.com> for more information on Dave.

Russ Wilde The Wilde Experience

Renowned wakeboarder Russ Wilde, pro-wakeboarder with 14 years instructional experience, hit the road again this year on a nationwide tour displaying his own skills plus teaching young hopefuls and anyone interested in the sport how to wakeboard.

Students have commented how Wilde's professional advice can make a huge difference in a rider's skills and tactics. Whether one is beginning, intermediate or an advanced rider, lessons from Wilde are purely beneficial and a rewarding experience.

"Some of my students come to me having never gotten up on a wakeboard before, while others are learning their first flip or hitting the double-up or better yet, hitting the triple-up for the very first time," explains Wilde.

The Wilde Experience made its very first trek in 2005 and has proved to be a huge success year after year exposing new riders to the sport.

Check with your local dealer to schedule your training session during the Wilde Experience Tour.

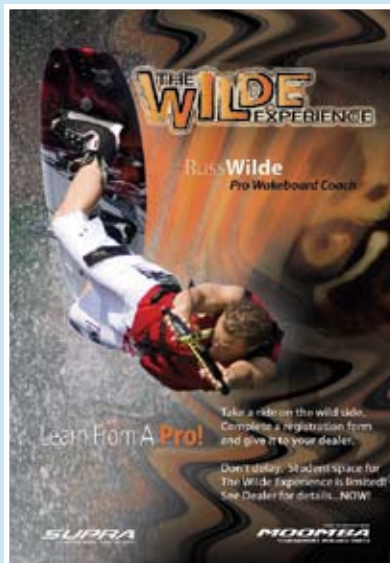
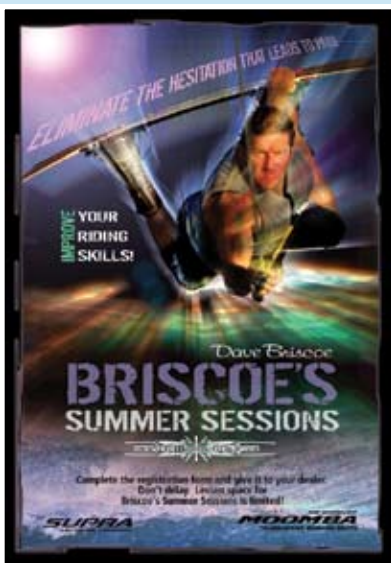
Kyle Schmidt Wakeboard Camp

Over the past few years at The Wakeboard Camp, Kyle has created a program, a coaching style and terminology that is used throughout the wakeboard world. It teaches riders to fall less, to teach themselves without a coach and actually form a visual, structural and progressive path to their next goal trick. All at the same time saving riders a lot of hard falls that the old school of "cut hard and throw it harder" style of coaching used to bring to the table.

Kyle Schmidt's teachings can come to you in a few different forms now. Not only can you attend The Wakeboard Camp for his teachings, you can also read his instructional articles in Wakeboarding Magazine, buy his top selling instructional DVD series "The Book," or attend one of Kyle's clinics at your home lake. Throughout the rest of this year and next, Kyle will be working alongside Moomba and Supra Dealers to set up these clinics for anyone interested.

Contact your local dealer to schedule a session with Kyle Schmidt.

2008 Training Tour Clinics



'07 Rockstar WWA Wakeboard World Championships

Riders from around the world gathered at Sparks Marina in Reno, NV to compete in the 2007 Rockstar WWA Wakeboard World Championships presented by Supra. Over 170 amateur and professional riders representing 15 countries tested their shredding skills behind the massive wakes of the Supra Launch 24SSV and Launch 22SSV.

Professional divisions included Wakeboarding and Wakeskating competitions for both men and women. Amateur divisions included Jr Boys, Boys, Girls, Jr. Men, Jr. Women, Men, Women's, Masters and Veterans. The first two days of events saw the amateurs out on the water with pros joining into the fray over the weekend.

In the Pro Men's Division, Rusty Malinoski, JD Webb, Erik Ruck, Phillip Soven and Shane Bonifay competed to take the title home. In the end, it was 18 year old Phillip Soven from Longwood, FL that took the top spot and claimed his second World Title, completing his year of dominance on the pro tour.

Supra team rider Amber Wing unseated 4-time champion Dallas Friday, riding clean and big in some of the gnarliest water conditions for the week. Fifteen year old Nicola Butler served notice that she is a force to be reckoned with, claiming bronze over a stacked field of the best riders in the world.

US National Wakeskate champion and Supra team rider Reed Hansen from Groveland, FL took the Gold home over season-long challengers Ben Kaiser who placed second and Steven Campbell who placed third.

In a competition first, Pro Men riders were teamed with Boy riders to compete against each other in the Moomba—PCMW Double-Up Event held on-site for an additional \$5,000 of prize money. The boys went off the dock first to the applause of their fellow competitors. Jacob Valdez got the party started with a clean 7 that netted him first place amongst the Boy group. Olivier Deromme took the Men's side of the double-up, but the team of Valdez and Supra team rider Austin Hair won the combined competition when Hair nailed his double-up.

In addition to the riding, the 2007 World's saw unprecedented sponsor support. Families were treated to the XTP Family Bowling Night at the National Bowling Stadium in Reno, NV. Supra and Kicker treated the amateur divisions to the Dinner of Champions, an on-site awards banquet and for those lucky enough to sport a Supra credential, a Supra and Kenwood VIP tent was available throughout the event featuring Nintendo Wii gaming, team rider videos and of course all the food and beverages needed to make each day a party.

Maybe the coolest part of the entire event was the commemorative DVD's that Supra and Roswell created. Each rider who participated in the amateur competition was given their own personal DVD. The DVDs featured rider interviews and a complete video history of the first day of competition for each riding class.

Each qualifier that was interviewed on camera continued to compliment Supra on the size and shape of the wake, commenting "Large wake, big wake, perfect shape," etc. interview after interview. The rider's response after experiencing the wake of a Supra could not have been any better.

Rick Tinker, President of Skier's Choice stated, "We enjoy the opportunity to place our products in a position to receive critical response from some of the most admired and respected riders in the industry. As importantly, we are glad to give back to the sport which we love. As a sponsor of the World's, we will continue to raise the bar within the event".

Congratulations to everyone who qualified and took the waters at Sparks Marina! We look forward to once again sponsoring the Worlds in 2008. Plans are now underway, check www.supraboats.com for further details.



Natsumi Noda (Saga City, Japan), 28, took home the World's Title for Amateur Women's Division.



Reed Hansen, Team Supra rider gets showered from friends after his Gold medal performance.



Pro Women's Winners include from left to right, Dallas Friday, Amber Wing and Nicola Butler



Josh Sanders and Trevor Hansen play Nintendo Wii with guests in the Supra VIP tent.



Riders Ben Greenwood, Reed Hansen, Trevor Hansen, Skier's Choice Product Manager Matt Brown, Josh Sanders, Amber Wing and Skier's Choice Project Engineer, Ryan Lewis.

TEAM SUPRA



In recent years, Sanders has built a huge reputation as one of the most ground breaking and hardworking wakeboarders in the world. After dominating in 2005 and walking away with the first ever King of Wake Title, an injury sidelined Josh for part of the 2006 season.

Taking wakeboarding to new levels by surfing the world famous Teahupoo in Tahiti and chartering underground slider parks in St Louis, Boone Terra Mine, Sanders has been a dominant figure in the media eyes since the beginning of wakeboarding. Josh's underlying commitment to the sport makes him a certified threat going forward. On top of opening his own shop in his home town, this dominating talent was fortunate enough to take a clear winner off the market and was married at the end of 2006. With Katy at his side, it is clear that very little can stand in the way of our favorite Aussie's return to the top!

HIGHLIGHTS

2005

King of Wake
US Pro Tour Champion
Australian National Champion
Australian Pro Tour - Rider of the Year
Indmar Performance Award
Asian X-Games Champion
O'Brien Scandinavian Invitational Champion

Italian Pro Tour Champion
Australian Pro Tour Runner-Up
World Cup, France - 3rd
US Pro Tour Stop #4 - 2nd
US Pro Tour Stop #3 - 5th
US Pro Tour Stop #2 - 5th
US Pro Tour Stop #1 - 2nd
Australian Pro Tour Stop #6 - 1st

2004

Redbull Double-Up Competition Champion
Wakestock Rail Slide Competition - 3rd
Organized Australian Open
Developed Supra Grom Series
Director — The Wakeboard School
Director — The Josh Sanders' Ride Australia Tour

When Amber was three years old her mum put her into Gymnastics, where she competed for ten years. Five out of the ten years Amber represented her state and Australia in Gymnastics.

At the age of 18 while training for the Olympic Trials, Amber started wakeboarding and found the same love she has with gymnastics in wakeboarding. Amber immediately wanted to wakeboard every day. Wakeboarding took over her life.

Amber explains, "I am extremely motivated in pushing myself to my limit. I love winning contests and standing out on the water doing tricks that other people don't do. I love teaching and introducing people into wakeboarding and have been coaching at various camps around Orlando for the past 4 years. Currently I am coaching at The Wakeboard Camp."

In June of 2007 Amber Wing said, "I am going to be the best female Wakeboarder in the World. I am going to continue to land tricks that no other girl in the world is landing, which will continue to push Women's wakeboarding to the next level. In August of 2007, Amber Wing won 1st Place at the WWA World's Wakeboarding Championships in Reno, NV.



HIGHLIGHTS

2007

WWA World Wakeboarding Championships - 1st
Australian Pro Tour Champion
Australia Pro Tour Stop 1 - 1st
Australia Pro Tour Stop 2 - 3rd
Australia Pro Tour Stop 3 - 1st

Australia Pro Tour Stop 4 - 1st
US Nationals - 1st
US Pro Tour Stop #1 - 2nd
US Masters - 3rd

2006

First Female in the World to Land a 720
US Masters - 2nd
Gravity Games - 2nd
Reno PWT Stop - 3rd
Australian Pro Tour - 2nd

Australia Pro Tour Stop 2 - 1st
Australia Pro Tour Stop 3 - 1st
Australia Pro Tour Stop 4 - 1st



The end of last season and the '07 season has already proven to be very successful for young Austin Hair, being his rookie year.

Austin explained, "I'm pretty happy with how things have come along so far. I competed in my first pro contest at Nationals and advanced to the WWA World Championships held in Reno, NV."

Somewhere during Austin's first semester came the idea of riding the Australian Pro Tour. Austin took a couple of online courses and decided to try his luck down under. The Australian tour ended up giving Austin much more exposure than he would have expected. Austin came home with a 2nd place finish for wakeboarding and as the overall wakeskate tour champion.

In March, Austin won the wakeskate King of Spring contest, along with Pan Am games. In wakeboarding Austin took 8th place at the Pan Am's, most recently, with a 5th place finish at the Wake Games.

HIGHLIGHTS

Wakeboard 2007

4th Official Pan American Games
1st World Championship ProAm Double Up
1st Place WWA Nationals
9th Championships
9th Pro Wakeboard Tour, MN Stop
5th Wake Games
8th Pan Am
2nd Australian Pro Tour, Sydney Stop

2006

6th Pro Am
3rd USA Wakeboard Nationals
21st WWA World's
21st WWA Nationals

Wakeskate 2007

4th Byerly Toe Jam Boat Division
9th Byerly Toe Jam Cable Division
9th Wake Games
1st Pan Am Champion
1st King of Spring Champion
1st Australian Pro Tour Overall Champion

2006

14th Pro Tour
1st Collegiate National Champion
Runner Up USA Wakeboard National



Reed Hansen

Thus far Hansen has had a very exciting and successful 2007 season. Yes, he placed first at the Tige Pro-Am, the 2007 WWA World Wakeboarding Championships and he took the gold at the 2007 National Wakeskate Championships. His first tournament was Toe Jam, Orlando. He won 1st place in the rail event and this win sparked interest from Fuel TV inviting Reed on a California Coast winch tow trip. Hansen went with several surfers and shredded the Coast line from North Carolina to South Carolina for ten days. Upon his return, Reed took off to Texas for the 2nd Tow Jam stop. This one was boat and cable. Hansen made it to the podium in both events. Hansen is now qualified to compete in the final Toe Jam Championships in September. Hansen's name was just released on the cover of the new Wake Magazine where he is also featured in an article along with Nick Taylor. Reed was one of the selected riders in Fuel TV's 10 Count including athletes from all of Action Sports.

HIGHLIGHTS

2007

- 1st World's
- 1st Nationals
- 1st Toe Jam Stop 1
- 1st Toe Jam Final

2006

- 1st Portland Pro Tour Stop
- 1st Acworth Pro Tour Stop
- 1st Wakestock

The first time Trevor Hansen strapped his feet on a wakeboard was at his family's camp, The World Wakeboard Center. Hansen explains, "I don't really remember how I did, but I remember falling in love with being on the board right away. I thought that it was so much fun and it was all I wanted to do from that point on."

This statement alone testifies to Trevor Hansen's unwavering dedication to his craft. Hansen's reputation as a smooth rider pushing the boundaries of what can be done on a wakeboard has landed him atop his own pro model with CWB, the Marius.

Hansen has had an awesome year on the Pro Tour Taking 2nd place in Kelowna, which helped him seal his 5th place finish on the PWT. Trevor also had his best King of Wake finish this year landing him in 3rd place for the overall season. Hansen explains, "I couldn't be happier about this year. There are so many amazing riders on the tour right now and to finish 3rd overall feels like a huge accomplishment."



Trevor Hansen

HIGHLIGHTS

2007

- 3rd Maters
- 2nd Kelowna Pro Tour
- 5th Overall Pro Tour
- 3rd Wakegames

2005

- 1st Alliance Ollie Contest

2002

- 2nd Pro Mens Nationals

2004

- 3rd Pro Mens World 3rd palce
- 1st Pro Mens Gravity Games Champion



Ben Greenwood

As a child Greenwood spent his summers with his parents in a cabin on the lake. At first Ben learned how to ski and started doing jumps and tricks on his skis. When wakeboarding came out it only seemed natural for him to try wakeboarding. Now Greenwood is known for blazing his own path as a leader in the industry for his distinctive freestyle tricks and ability to compete with the best. Greenwood prefers to free ride due to the fact that competitions limit his style; although, he will continue to compete throughout his career. Greenwood focuses his career around variations of new tricks.

Greenwood explains to newcomers interested in wakeboarding, "Do your own thing. Don't follow everyone else's path, do what feels right." Greenwood's ideology of professional wakeboarding has only landed him success. In 2005, Alliance Magazine named him Rider of the Year, Quiksilver named him Team Captain and Manager for their Wakeboarding Team and Liquid Force has manufactured a board with Greenwood that is as unique as his riding style, The Witness. The design behind The Witness allows Greenwood to take tricks bigger than before.

HIGHLIGHTS

2007

- 9th on Reader's Poll - Wakeworld.com

2006

- 10th on Reader's Poll - Wakeworld.com

2005

- Rider of the Year - Alliance Wakeboard Magazine

- Opening Sections - X-Dance Winner - "The Truth" from Liquid Force
- "Innuendo" - Alliance Visual Experience

- Full Sections in - Relentless, Such is Life, The Butter Effect, My Side

SUPRA 2008 Model Features



Five Star Protection Plan *(NEW, extended/transferable warranty)*

- Limited Lifetime warranty on hull
- Limited 5 Year warranty on engine
- Limited 5 year warranty on most boat component parts

Power / Mechanical Components

- Indmar Assault 5.7-liter V-8 325 horsepower MPI Engine with Electronic Throttle Control standard in all Supras.
- Optional Indmar ETX CAT 5.7-liter V-8 340 horsepower MPI Engine is the first four-star emission rated engine in the direct drive category. It dramatically reduces harmful toxins in the exhaust without compromising engine power. Standard equipment on all Limited and Gravity Games editions.
- NEW Optional Indmar 6.0-liter V-8 409 horsepower MPI Engine available on Launch 21V, Launch 22SSV, Launch 24SSV, Sunsport 22V, Sunsport 24V, and Launch 24SSV Gravity Games models.
- Optional 8.1-liter V-8 450 horsepower is offered on Launch 22 SSV and 24SSV and also on the Sunsport 22V and Sunsport 24V.

Perfect Pass standard on all Supras

- SmartPlate technology integrates with Perfect Pass allowing for optimum hole shot performance and individualized rider memory for preferred speed and wake plate settings
- NEW driver's shifter without cable
- NEW tilt helm assembly
- NEW electrical components
- NEW ignition switch with Deutsch connector
- NEW Medallion Mini with improved user logic
- NEW screen on Perfect Pass membrane switches for improved logic

Appearance Items

- NEW brow over the bezel that has a leather-like wrap
- NEW steering wheel
- NEW graphics options
- NEW stainless steel snaps on tonneau and cockpit covers
- NEW improved glove box door and hinge
- NEW ballast bags for 22' and 24' models
- NEW Supra fret on windshield

Upholstery Components

- NEW Syntec Nano-Vinyl for the ultimate in stain resistance and ease of cleaning



Sunsport 20V



Sunsport 22V



Sunsport 24V



Launch 20



Launch 20SSV



- One of two tournament boat manufacturers to use Gore Tenara thread in all upholstery seaming. Increased stain resistance, tensile strength, UV resistance and durability.
- NEW driver's seat slide and swivel
- NEW larger diameter gas shocks
- NEW ergonomic placement of throttle handle
- NEW non-skid material on swim platform on sundeck stepway and on steps into Sunsport 22V and Sunsport 24V.
- NEW improved wrap on brow of Supra dash
- NEW hinges on door mounts (beefier)
- NEW dual gas shocks on all sundecks

Stereo Components

- NEW Kicker speakers in base stereo system
- NEW Kenwood stereo head unit
- NEW Ipod/MP3 input in glove box
- NEW tower speaker pair
- NEW tower speaker light combo w/ LED
- NEW Kicker subwoofer
- NEW Kicker amplifiers

Tower Accessories

- NEW Roswell Black Anodized Board Racks for Gravity Games and World's editions

- NEW Roswell swivel board racks
- NEW board rack tines
- NEW tower mirror bracket

Trailer / Accessories

- NEW Brakes on 2nd axle as standard (tandem axle)
- NEW 18" wheel option on all tandem trailers
- NEW trailer bunk positions to facilitate boat drainage
- NEW upgraded optional wheel for trailer
- NEW belly spare tire
- NEW transom strap option
- NEW engineered wiring harness for trailer
- NEW LED trailer lights as standard
- NEW tread plate option
- NEW Gravity Edition and World Series Trailer

Individual Boats

- Core wakeboarding boats: Launch 20SSV, Launch 21V, Launch 22SSV, Launch 24SSV, Gravity Games 24SSV
- Crossover Performance: Launch 20, Sunsport 20V
- Family Performance Boats: Sunsport 22V, Sunsport 24V



Launch 21V



Launch 22SSV



Launch 24SSV



Gravity Games 24SSV



Launch World's Edition



SUPRA Carve the Water. Own the Lake.

"A better boat. A better wake." These words may appear to be nothing more than a cleverly crafted advertising slogan until you feast your eyes on the new and exclusive Supra Ride System. It is the difference between being a boat that is all about wake performance and being a boat that actually is all wake performance. The Supra Ride System, standard on all Supra Models, allows you to custom design your wake into the exact type of launching pad you desire - from soft and buttery to big and beefy - and to enjoy it to the fullest extent in nearly any lake condition imaginable. With fully integrated PerfectPass™ speed control and SmartPlate™ wakeplate adjustment components, the Supra Ride System can be set to remember a rider's preferred speed and wake plate settings at the push of a button. From now on, Supra riders will not only make big wakes, they'll own them personally.

The exclusive Supra Ride System is what elevates the performance of Supra boats above all other tournament wakeboard boats. Standard on all Supra Launch Models, the fully integrated Supra Ride System optimizes straight-line tracking, speed control and time to plane, while automatically adjusting at all times to rider preference for wake shape and hole shot. With the Supra Ride System, you can automatically fine-tune your wakes into a launching pad in virtually any lake condition imaginable. The Supra Ride System includes versatile multi-position seating, so even the watchers can enjoy the show as much as the rider.



The deepest keel in the industry. Entry point design at 43 to 47 degrees keeps the bow in the water providing a smoother ride, plus superior tracking and handling in all water conditions.



Gravity II Ballast system adds weight at the push of a button for the fattest wakes, while giving you total control in adjusting wake size and wake balancing.



Integrated PerfectPass speed control system with one-touch control that remembers a rider's preferred speed setting and holds it to within 0.2 mph.



SmartPlate optimizes hole shot, remembers and automatically adjusts to a rider's preferred wake shape and stores up to 8 different rider profiles in memory.



Multi-Station Rear Facing Seating is a versatile configuration that allows up to 7 passengers to sit in comfort and style while directly facing all the action of the rider.

WATCH & LEARN From Supra Professional Riders

**Choose A Rider
Then Choose A Trick**

Step By Step Instruction

**Watch On Your
Computer and Ipod!**

Watch and learn from Team Supra Pro Riders at www.supraboats.com. The new 2008 Supra website features a trick room where you can take lessons from our pros right from your computer. You can even take them with you to the lake with our downloadable iPod videos. Learn how to do tricks like the pros with step by step instruction from Josh Sanders, Ben Greenwood, Trevor Hansen, Kyle Schmidt and World's WakeSkate Champion Reed Hansen. Look for new videos from Amber Wing and Terry Winter later this year. If you want to add to your bag of tricks, make sure you check out our all new trick room.

NOW AVAILABLE!
New '08 Apparel & Accessories

www.supraboats.com

SUPRA
A BETTER HULL. A BETTER BOAT.

SUPRA

Any questions contact Blair at 866-691-5141

Supra Negotiates Competitive Insurance For Owners



Skier's Choice has partnered with Boater's Insurance Agency to provide you with competitive value added insurance. For more than 25 years, Boater's Insurance Agency has built an outstanding reputation insuring thousands of boaters every year.

These plans are only available through Supra and Moomba Dealers.

BENEFITS AVAILABLE TO SUPRA OWNERS:

- Agreed Value Policy (No Depreciation)
- Instant Binding Authority
- Competitive Rates
- Towing Reimbursement
- Medical Payments
- Uninsured Boaters Coverage
- No Lay-up Periods
- Easy Payment Plans
- Fast Track Claims Service

For more information contact your local dealer. Log onto www.supraboats.com for a complete list of dealers in your area.

2008 BOAT SHOW SPECIALS

BIG SAVINGS Factory Incentives!



Boat Show Incentives Will Be Announced in December.

Go to www.supraboats.com For Details!



SUPRA
A BETTER HULL. A BETTER BOAT.

BOATMAN'S CHECK LIST

For your safety and enjoyment, check all of these items before you start the engine.

- ✓ WEATHER CONDITIONS - Safe to go out?
- ✓ CAPACITY PLATE - Are you properly loaded?
- ✓ PERSONAL FLOTATION DEVICES - Adequate types and number on board?
- ✓ EMERGENCY GEAR - Fire extinguisher, anchor with line, tool kit, signaling device, bailer, paddle, etc., on board?
- ✓ BATTERY - Fully charged? Cable terminals clean and tight?
- ✓ STEERING SYSTEM - Working smoothly and properly?
- ✓ FUEL SYSTEM - Adequate fuel? Any leaks or fumes?
- ✓ ENGINE - In neutral?
- ✓ ELECTRICAL EQUIPMENT - Lights, horn, pump working properly?
- ✓ BILGE PUMP - Working properly and free of debris?
- ✓ DRAIN PLUG - Securely in place?

OWNER'S REUNIONS Orlando — Chicago — Portland — Lake Havasu



This year's Owners' Reunions proved that there is nothing better than spending time with people who share the same enthusiasm for boating and watersports!

This year John Sesstor took the advice of Ed Geary by pulling together the 1st annual Owner's Reunion in his home town by working with his local dealer Gerry Oppliger at Active Watersports. The event was a huge success and looks to expand in 2008.

Mike Pinnow, Glen Pollack, Chris Webber and Thad Nurmi at Ultimate Wake of Chicago Sea Ray in Chicago, IL pulled together their 1st Annual Owner's Reunion at the American Legion on Nippersink Lake in Fox Lake, IL. Again, another outstanding event!

Ed Geary and Bob Campbell's Owner's Jamboree just keeps on growing! This year the 3rd annual reunion hosted 32 Supra and Moomba Boats with over 174 guests in Orlando, Florida. This group is catching up to the Southwest Owner's Reunion in Lake Havasu City!

And last but not least, Island Marine hosted the grandfather of Owner's Reunions, the 5th Annual Southwest Owner's Reunion, hosting the largest gathering of Supra and Moomba boats in one place. More than 50 Supra and

Moomba boats were on hand with over 200 guests at the Nautical Inn Resort in Lake Havasu City, AZ.

Something I have noticed from the venues in which we host these reunions is that they look forward to the Supra and Moomba owner's event each year. They say this is because the event is like a pep rally and we have such a fun group of people that attend. I have also noticed guests saying before the events are even over that they can not wait until next year. You know, this proves my point; there is nothing better than spending time with people who share the same enthusiasm for boating and watersports! Join us next year or start one in your area. Think you can pull together a group of 20 or more Supra and Moomba boat owners with your dealer for a weekend of safe fun? If so, contact Natalie Carrera at 865-983-9924 or ncarrera@skierschoice.com. That's just what Ed Geary and John Sesstor did in their area and now it is an annual event.

Check out our message boards or event section under the community tab on our website at <http://www.supraboats.com/> for more information on 2008 Owners' Reunions as more information becomes available.

New Stain Resistant Nano Vinyl

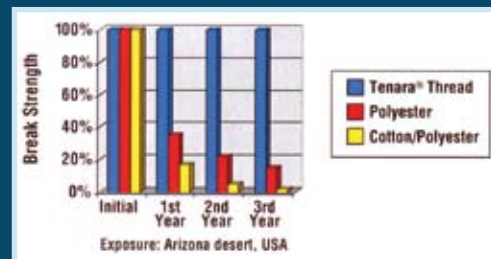
Supra has further enhanced our 2008 luxurious cabins with new Nano Block Technology infused vinyl that features a stain resistant topcoat for improved durability. The Nano Block Technology (NBT) "blocks" the vinyl surface from mildew and other microbial problems. NBT has a Nano UV inhibitor that protects your vinyl upholstery up to three times longer than conventional finishes, maintaining and preserving the color longer than ever before. NBT also forms a barrier against abrasions, grease, grime, sun tan oils and even gasoline. The toughest stains easily wipe clean.



The beauty and durability of the cabin has been further enhanced by using GORE TENARA thread by GORE-TEX. GORE TENARA sewing thread creates strength in all stitches and seams that will last a fabric's lifetime. GORE TENARA sewing thread is engineered to last and they guarantee it! If your seams deteriorate before your fabric does, they will pay for the seam repair.

Effects of UV Sunlight on Commercial Sewing Thread

The chart below compares break strength when exposed to desert UV conditions. After three years, polyester and cotton/polyester offer less



than 15% break strength compared to GORE TENARA thread at nearly 100%.

Supra is one of two tournament boat manufacturers to use GORE TENARA thread in all upholstery seaming. With Supra's durable, tensile strength, stain and UV resistant upholstery, your cabin is sure to maintain its beauty season after season.



INDMAR Indmar's Leading ETX/CAT Technology Exceeds NIOSH Standards

Indmar's patented Extreme Tuned Exhaust with Catalyst (ETX/CAT) is the only inboard gasoline marine engine ready for new 2008 California emissions standards.

In tests conducted December 2006, the National Institute of Occupational Safety and Health (NIOSH) found that Indmar Marine Engines' innovative ETX/CAT dramatically outperformed standard marine engines in the reduction of carbon monoxide (CO) in exhaust emissions. ETX/CAT is an extreme-tuned, high-performance exhaust manifold with a built-in catalytic converter that significantly reduces exhaust emissions including hydrocarbons, oxides of nitrogen, and carbon monoxide.

With new emissions standards for inboard engines and stern drives set to take effect in California next year and possibly nationwide in 2009, ETX/CAT makes Indmar's the only marine inboard engine in compliance with these new standards.

The NIOSH study took into account running time, boat speed, and proximity of boat passengers to the engine. NIOSH concluded that Indmar's ETX/CAT manifold reduces CO emissions over all areas of the boat and averages a 92% reduction directly at the exhaust opening. ETX/CAT CO emissions were slightly higher at the stern than elsewhere in the boat, yet well below the NIOSH ceiling for acceptable limits. ETX/CAT also reduces emissions to less than 5 grams of combined hydrocarbons and oxides of nitrogen. All of these factors mean improved boater safety and happy, satisfying days on the water for the whole family.

An ETX/CAT engine runs cleaner while providing the same exhilarating power, responsiveness and sure performance that customers have come to expect from an Indmar engine. The NIOSH report found that there was no measurable power loss from an ETX/CAT equipped engine compared to preceding Indmar engines, as both types were able to reach the same top boat speed at open throttle.

"Clearly our engines featuring ETX/CAT are a plus for the environment and for the boater. At Indmar we are always trying to be ahead of the curve and this new engine once again positions us as the leader for inboard marine engine technology," says Chuck Rowe, president of Indmar Marine Engines.

If you already own a boat powered by the ETX/CAT, congratulations! You are part of a select group of informed boat owners who demand the most advanced, best performing marine inboard engine in the world today. If you don't already own a boat equipped with the ETX/CAT, visit your boat dealer today and take an up-close look. For emissions compliance that's cleaner, greener, safer and way ahead of the game—and for long-term performance and satisfaction—an Indmar 5.7-liter fuel-injected ETX/CAT high performance engine is one smart choice in marine power.

Indmar
MARINE ENGINES



Indmar employees provide hands-on care and attention to each engine manufactured, ensuring that all parts run smoothly.



The addition of the ETX/CAT catalytic converter greatly reduced emissions and puts Indmar ahead of the competition, ready for the new 2008 California emissions standards.



Painstaking engineering and multiple rounds of testing yield an end product superior to the competition.

DEALER PROFILE Ultimate Wake Of Chicago Sea Ray

1) How long has Ultimate Wake of Chicago Sea Ray been in business?

Our store was started in 1959 as a boat dealership. The current owners took over in 1995 selling Sea Rays and started Ultimate Wake Watersports as a division of Chicago Sea Ray in 2004; at this point we started carrying Supra and Moomba.



Mike Pinnow, Glen Pollack, Ben Greenwood and Chris Webber.

2) List all the boat brands that Ultimate Wake of Chicago Sea Ray sells.

Ultimate Wake Watersports sells Supra and Moomba boats and Chicago Sea Ray sells Sea Ray, Meridian, Azimut, and Godfrey Pontoons.

3) What is the typical boating season in the Chicago area?

For the average boater our season runs from Memorial Day through Labor Day. However, there are those who like to stretch the season and start when the ice goes out in late March and ride until the ice comes back in November.

4) How has wakeboarding and wakesurfing made an impact on your in-board sales?

As a dealership that sells both wakeboard and waterski boats and runabouts, we have been able to see how the market has changed and is continuing to do so. As more people are getting into wakeboarding and water-specific sports, there has been a flux in sales towards wakeboard boats. In the dealership we are seeing more people come in looking at Sea Rays and walking out with either a Supra or Moomba. We attribute this to the fact that people are learning how Supras and Moombas perform for wakeboarding and waterskiing compared to the runabouts as well as how well they handle compared to the ski boats of yesteryear.

5) Is there a local inboard scene or hotspot in Chicago?

Yes, there is definitely a hotspot for inboards in the Chicago land area. Where we are located is about 45 minutes northwest of Chicago in an area populated with lakes, both public and private. There is one area in particular – The Chain of Lakes in Lake and McHenry County. The waterway agency for the area has over 80,000 registered boats for the chain. This includes the Fox River which is a local stomping ground for the areas top wakeboarders. A specific section of the river from the McHenry dam down to the Algonquin dam is the best spot to ride and you can always find a boat out boarding.

6.) What wake gear do you carry in your pro shop?

We carry: H.O., Hyperlite, Radar, Ronix, Byerly, Accurate, BFI/Fly High.

7) Why has Supra and Moomba been so successful at the Chicago area?

Supra and Moomba have been very successful in the Chicago market for a few key reasons:

- We are located by one of the busiest public waterways in the nation.
- The quality vs. price of Moomba sets it apart and easier to buy than other brands.

- Build quality of the boats and the pricing puts us ahead of the competition.
- Ride quality of the boats in rougher water is better than the competition.
- Sales staff is willing to go that extra mile to make sure that every customer is completely satisfied from start to finish, which gives us great referrals.
- Actively promote the boats by putting them on the water to be seen by potential customers.



Ashley and Patti in Parts and Service.

8) What is Ultimate Wake at Chicago Sea Ray mantra?

Our goal is to help people have fun on the water in a way that is ethical and encourages repeat business as well as referrals.

9) Is there anything unique about Ultimate Wake of Chicago Sea Ray you would like to share?

We are a landmark for the area; we have a 30 foot boat on a 50 foot pole on the corner of the busiest intersection in Lake County. Every employee of Ultimate Wake Watersports is an enthusiast and participates in watersports (wakeboarding, slalom skiing, bare footing). We also have the space to put every boat from both the Supra and Moomba line up in the showroom on display.

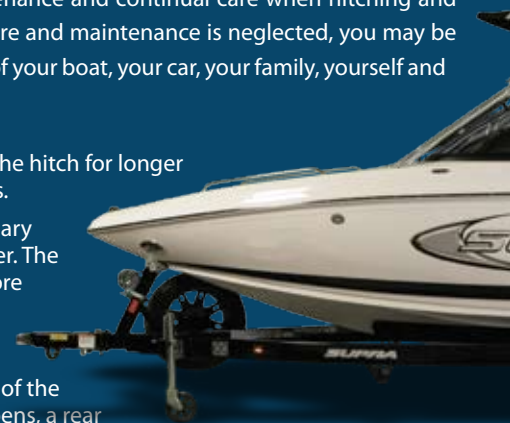


Landmark 30' boat on a 50' pole!

Towing Your Boat

Your boat trailer is an important part of your boating equipment. All too often a trailer does not receive the attention that it demands and deserves. Proper maintenance and continual care when hitching and towing is necessary. If care and maintenance is neglected, you may be endangering the safety of your boat, your car, your family, yourself and others.

- Periodically lubricate the hitch for longer wear and quieter turns.
- Extra caution is necessary when towing any trailer. The heavier the rig, the more time it takes to accelerate, pass and stop. Most boats on trailers obstruct the rear view of the driver. When this happens, a rear view mirror on each side of the towing vehicle is required by law.
- Make sure your vehicle is capable of towing the trailer. Be sure the engine, cooling system and brakes can withstand the strain that towing will put on



Active Water Sports DEALER PROFILE

1) How long has Active Water Sports been in business?

Warren started Active 26 years ago selling water skis out of the back of his car.



2) List all the boat brands that Active Waters Sports sells.

We carry Moomba, Supra, MB Sports and Sugar Sands.

3) What is the typical boating season in the Portland area?

Generally the season runs from April to September, but we have a lot of diehards who ride all year long in dry suits and heavy wetsuits.

4) How has wakeboarding and wakesurfing made an impact on your inboard sales?

We've always primarily been an inboard dealer. With the amount of people who have bought from us in the past, we've been able to persuade customers away from I/O by showing that a tourney boat has more to offer than just going 36 mph in a straight line.



5) Is there a local inboard scene or hotspot in Portland?

Our local boat scene is huge! Not only does the Pro Tour and the Dew Tour come to town, but we've had the Liquid Force Slider Show at our Oregon City store and in the past

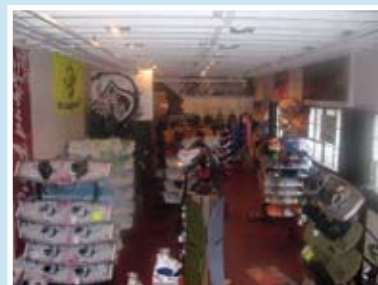


transmission,
on them.

we put on "Wet Wednesdays" in front of a restaurant on the Willamette. The Willamette River runs down the middle of Portland and the Columbia River separates Oregon and Washington. So we have plenty of water very close and many reservoirs and mountain lakes within 30 to 45 minutes from our door. We have a large group of customers that boat and hang out together the entire year.

6) What wake gear do you carry in your pro shop?

We actually have the largest Pro Shop in the NW. Some of the brands we carry are H.O., Hyperlite, Ronix, Liquid Force, Sling-shot, O'Neill, Straight Line, Audio wakeskate shoes, Reef, Spy, Smith, Billabong, Inland Surfer, Kustom, Fusion, DBot 5, Skylon, and Air Boom.



7) Why has Supra and Moomba been so successful in the Portland area?

The Supra line offers the "Bling Factor" to compete with higher end lines and we've been able to turn your normal I/O customer towards the Moomba line by providing excellent customer service and superior knowledge of the boating industry.

8) What is Active Water Sports mantra?

"We take your fun seriously!"

9) Is there anything unique about Active Water Sports you would like to share?

We are a full service dealership. We do everything from on water clinics at our own private ski lake, owners reunions, camps and tournaments. We have a ride guarantee program in our retail department, that if you don't like what you bought, bring it back within 30 days and we'll put



you in the right product. Lastly, Warren has made this a very family oriented businesses, so when you make a purchase from Active you're not only a customer, but part of our family.

PLANNING AHEAD Could Save Your Day!

1. CHECK THE FLUIDS/COOLING SYSTEM

Obviously, check the oil and transmission fluid weekly, if not daily. Each manufacturer has its own recommendations, but we tell everyone to replace the oil every 50 hours and the transmission fluid every 100 hours. If the boat's equipped with a closed cooling system, you should check the level of the coolant too. Pull off the water hoses and look at the raw-water filter screen to see if it's clogged with weeds or debris that could cause the engine to heat up. Hydrilla, an aquatic plant found in almost every lake in the Southeast, is especially notorious for leaving its leaves in the strainer.

Since you're using your boat often in the summer, there's not much chance for the impeller to sit long enough to produce a "set," in which the blades flatten out against the cam, but you still want to check it for wear. Just take a couple of screwdrivers and pop it out.

2. GET THE WET OUT (CHECK YOUR BILGE PUMP)

With people getting in and out of the boat constantly, and the intermittent dripping from the packing on the shaft, you're going to get water down around the engine. So you want to make sure the bilge pump is operating well. Run it when there's still water in the boat so you can see if it pumps out the side. Some pumps have a lever that lets you test the automatic flow switch. If the water gets too high in the boat, especially with V-drive boats that have engines that sit lower in the hull (and thus in the water), it could destroy the alternator and the starter and eat away at the transmission shaft.

3. MONITOR PROP DINGS

With increased hours on the water comes a better chance of thumping your prop against something that can ding it. Check the prop blades regularly — especially if you heard something unusual while you were out. With dings on the prop, you could feel a little vibration at first, but it could develop into something worse over time, like a worn-out strut bushing.

4. KEEP YOUR GAS DRY

If you live on a lake and you're using gas cans to fill up your boat, be careful about where you store them. Don't just leave them exposed to the elements where they can accumulate water or debris. The pickups for the gas tank reach all the way to the bottom of the boat, and since water is heavier than gas, the first thing the engine will suck up is water, making it run lean and smoke or sputter. Just to be safe, use a fuel additive like Heet to remove any residual water from the tank.

5. KEEP YOUR EYES OPEN

Every week, take just a few minutes to pop the hatch and do a visual inspection. You don't have to be a mechanic to see a belt that's worn or a hose that's leaking or a wire that has come loose. If you catch something early on your own initiative, you'll save yourself a lot of money and a few days off the water.



SKIER'S CHOICE, INC.

1717 Henry G. Lane Street
Maryville, Tennessee 37801
www.supraboats.com

SUPRA
A BETTER WAKE. A BETTER BOAT.

Boating Safety and Enjoyment Go Hand-in-Hand: You Can't Have One Without the Other!

Each year we reprint and update this article because safety is so important. Please read thoroughly. At Skier's Choice, we build Supra boats to provide a safe and fun boating experience, but you play an important role in making your time on the water safe for you, your family, your passengers or anyone who may be in and around your boat. Please take time to review the following important safety reminders before you head to the water.

Review the Owner's Manuals for your boat. Every Supra originally comes with an Owner's Manual for the boat itself and one or more manuals for the boat's components. Before anyone operates your boat, they should first read and understand the information contained in the various manuals, particularly those sections dealing with safety. If you have misplaced any of the manuals, please contact your dealer or Skier's Choice, and we will send you a current Supra Owner's Manual at no charge. It may not contain all information relevant to your model, but it does have an extensive Boating Safety section and general information regarding use and maintenance. Owner's Manuals back to 2002 are available on our web site.

Review and comply with warning and capacity labels on your boat. Warning labels are placed on your boat to alert you to potential hazards that may not be obvious. They also tell you how to avoid the hazard. Warning labels should never be removed and, if any label is damaged, it should be replaced as soon as possible. Pay attention to the capacity label on your boat and do not exceed the limit. In 2003 and 2004, Skier's Choice revised its warning labels to include additional information. If you need replacement warning labels, please contact your dealer or Skier's Choice. We will gladly send you the latest warning labels at no charge. Current warning labels can be viewed on our web site.

Understand and follow the Boatman's Checklist. The Boatman's Checklist is a list of important items to check before each use of your boat. We place a checklist label on every boat we build. It can be found in the helm area, either near the throttle, or on the observer seat base, or in more recent models, inside the glove box. If you need a replacement label, please contact Skier's Choice and we will send you one at no charge. This label can also be viewed on our web site.

Prepare your boat with the proper accessories and equipment. Your boat comes from the factory already equipped with U.S. Coast Guard required safety equipment such as a fire extinguisher, horn, and proper inland lighting. In addition, the law requires that you keep Coast Guard-approved personal flotation devices on board for yourself and your passengers. We recommend that you also keep other useful safety equipment on the boat, such as a first aid kit, a signal device and/or flashlight, a marine radio, an anchor with line, and mooring lines with bumpers. You may need other items depending on your location, and you should check with local authorities and your dealer for further information.

Know your boat and keep it properly maintained. We strongly encourage you to arrange for a Supra dealer to perform a pre-season inspection of your boat. The various boat systems need professional annual inspection and servicing to ensure that important components are maintained to their original specifications, especially as they age. You should inspect these systems with each outing, paying close attention to the engine and exhaust systems, specifically around the manifolds, gaskets, and welds for signs of leakage or corrosion. Replace all worn or suspect hoses and fittings. Perform scheduled maintenance and repairs to keep all systems in working order. For more information regarding maintenance, refer to your Owner's Manual or talk to your service professional.

Know and comply with all boating rules and regulations that apply in your region. Before heading to the water, check with local and state authorities about boating and safety requirements. If you have access to a computer, most states have websites with information regarding boating rules and regulations. You can also check the U.S. Coast Guard website, listed below, for information on federal regulations and recreational boating safety. If you don't have internet access, you can call or write the federal or state organizations to have information sent to you by mail.

Take a safe boating course. In recent years, approximately 70% of all reported fatalities occurred on boats where the operator had not received boating safety instruction.⁽¹⁾ Safe boating classes are offered by a variety of groups and organizations, including the U.S. Coast Guard and U.S. Power Squadron. The more you know, the safer you, your passengers and others around you will be.

Stay current on recreational boating safety issues. You should regularly check with the U.S. Coast Guard Office of Boating Safety, as well as with your state boating law administrator for updates on boating safety issues. Internet links to several websites are listed on our web site. Watch for information in news and industry magazines and websites regarding dangerous boating and water sport activities. Always use good judgment and don't let anyone on your boat do something foolish or dangerous.

Do not allow "platform dragging" or "body surfing" behind your boat! Two extremely dangerous water activities are "platform dragging", also referred to as "teak surfing", and "body surfing." "Platform dragging" involves hanging onto the swim platform of the boat while it is in motion. "Body surfing" is lying prone on the water surface in close proximity to the transom or swim platform of a boat while the wake propels you along. Both are extremely dangerous water activities and are banned in most areas. They should not be permitted on your boat or anyone else's boat! Individuals who "platform drag" or "body surf" are directly exposed to high concentrations of carbon monoxide (CO) fumes in the engine's exhaust. In addition, these people are very close to the spinning propeller underneath the boat, which can kill or seriously injure them if they slip or get pulled beneath the swim platform. For more information, go to the U.S. Coast Guard website.

Make sure every passenger is familiar with safe boating practices every time you go out. Each time you take people out on your boat, ask about their experience level and provide instruction about safety. Make sure they are familiar with the warning labels. Make sure everyone knows your expectations and complies with obvious customs, like sitting down while the boat is in motion. Once you are on the water, maintain a presence of mind and keep an eye on your passengers. Give particular attention to children, and make sure that they are wearing life jackets whenever they are on board your boat. As in any activity, children need to be reminded about boat safety and kept under close supervision. Always remember that it's the driver's responsibility to operate the boat in a manner that ensures the safety of the passengers and those around the boat.

Use common sense. Do not allow anyone on your boat to do something that puts them or anyone else at risk of injury. It is difficult to foresee every unsafe situation, but make yourself aware of unsafe practices and use common sense all the time. Most recent U.S. Coast Guard statistics show that two thirds of boating fatalities are from drowning and that nearly 90% of victims who drowned were not wearing a life jacket. These same statistics also show that alcohol is involved with about 20% of all boating fatalities. In many states,

there are laws against having an open container of alcohol on your boat. No matter what the circumstances are, you should be completely sober and not drink alcohol while boating.

Ride safely and know your limitations and the limitations of those with you. Your Supra boat was built to meet and exceed performance expectation of wakeboard and waterski enthusiasts. Undoubtedly, you and those with you intend to use your boat for those purposes. Ride smart and obey safety guidelines such as the following. Know the waterways where you will be boating. Do not ride or ski in shallow water, near shore, docks, pilings, swimmers, or other watercraft. Always have a person other than the driver serve as an observer and agree on hand signals before starting. Always wear a U.S. Coast Guard type III vest. Keep in mind that individuals have varying skill levels and knowledge. We all like to try new tricks, but don't go too far in trying something new. Ride within your limits. Always ride in control and at speeds appropriate for your ability and the conditions. Always turn the ignition off when anyone is near the swim platform or propeller. Never drag a person behind a moving or running watercraft, and use long lines when pulling tubes. Also, being on the water and in the sun all day can be exhausting and can affect one's judgment. Do not push yourself when you are tired. Be aware of the limitations of your passengers and be ready to call it a day at the right time. You may find these and other safety guidelines in various publications, online, or by contacting Skier's Choice.

Please remember, boating safety and enjoyment go hand in hand – you can not have one without the other.

For further information visit these related links:

United States Coast Guard Office of Boating Safety:
www.uscgboating.org

United States Power Squadrons:
www.usps.org

National Association of Boating Law Administrators:
www.nasbla.org

Discover Boating:
www.discoverboating.com

USA Water Ski:
www.usawaterski.org

National Safe Boating Council:
www.safeboatingcouncil.org

Boating Safety "Sidekicks" for children:
www.boatingsidekicks.com

(1) Most recent Coast Guard accident statistics can be found at http://www.uscgboating.org/statistics/accident_stats.htm

Skier's Choice Inc.
1717 Henry G. Lane Street
Maryville, TN 37801

Toll-Free: 1-800-320-2779
Websites: www.supraboats.com
www.skierschoice.com
Customer Support:
CustomerService@SkiersChoice.com